



Legacy
Handcraft

Murphy Bed

Made To Order

Catalog



Welcome to **Legacy Handcraft's** Made-to-Order catalog. Here you'll be able to explore all the options available for your custom made Murphy bed. Should you have any questions, please do not hesitate to reach out to one of our representatives. We also have many of our Murphy bed options available for viewing at our showroom in Akron, PA.

Bed Orientation



Vertical

Max Height: 89 ½"



Horizontal

Max Height: 84 ½"

Bed Size



Twin

Width: 45 5/8"
Max Height*: 84 1/4"
Depth: 18"
Projects Open: 80 1/2"



Full

Width: 60 5/8"
Max Height*: 84 1/4"
Depth: 18"
Projects Open: 80 1/2"



Queen

Width: 66 5/8"
Max Height*: 89 1/4"
Depth: 18"
Projects Open: 85 1/2"



King

Width: 82 5/8"
Max Height*: 89 1/4"
Depth: 18"
Projects Open: 85 1/2"

*Height measurements are dependent on crown molding or top overhang.
Crown molding adds 2" to the width and 1"-1 1/2" to the top.
Contact for further details.

Bed Additions



Auto-Desk

The desk automatically pivots as the bed lowers, staying level the entire time with no need to clear your work surface. Perfect for home offices or multipurpose rooms, it blends form and function so your workspace is always ready when you are.



Drop-Down Desk

The Drop-Down Desk folds neatly away when not in use and pulls down when you need it. Its clean design maximizes floor space while giving you a sturdy work area. Ideal for students, hobbyists, or anyone needing a smart space saving solution.



Sofa

By day, it's a cozy place to relax, read, or watch TV; by night, it transforms seamlessly as the bed folds down over the sofa. Upholstered in durable, stylish fabrics, it's the ultimate way to turn your spare room into a true multi-purpose space.

Wood Type

Maple



Wormy Maple



White Oak



Panel Type

Shaker



Traditional



Mission



Maple Wood – Painted



Bone Black



Roycroft Bottled Green



Simply White



Newburyport Blue

Benjamin Moore & Sherwin Williams paint matching is available for an extra fee*

Oak Wood & Maple Wood – Stained

S2

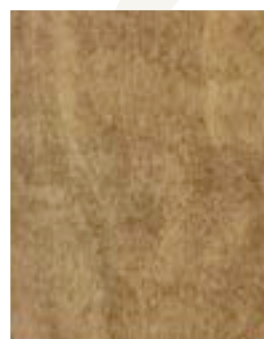


On Maple



On Oak

Fruitwood



On Maple



On Oak

Paint/Stain

Acres



On Maple

On Oak

Seely



On Maple

On Oak

Washington



On Maple

On Oak

Michael's Cherry



On Maple

On Oak

Antique Slate



On Maple

On Oak

Cappuccino



On Maple

On Oak

Paint/Stain

Tundra



On Maple

On Oak

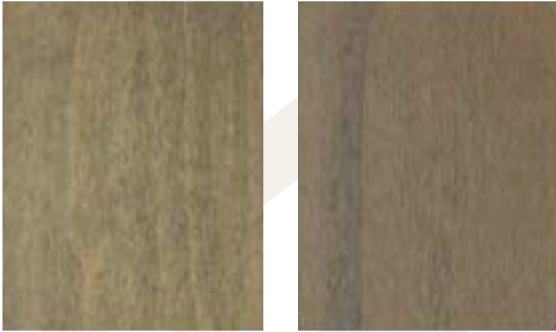
Cocoa



On Maple

On Oak

Driftwood



On Maple

On Oak

Mission Maple



On Maple

On Oak

Rich Tobacco



On Maple

On Oak

Brandy Wine



On Maple

On Oak

Paint/Stain

Barn Board



On Maple



On Oak

Weathered Grey



On Maple



On Oak

White



On Maple



On Oak



Hardware



**Black
Square**



**Black
Rounded**



**Silver
Square**



**Silver
Rounded**



**Gold
Square**



**Gold
Rounded**



Cabinets



Cabinets can be added to one or both sides of your Murphy bed, provided the installation room can accommodate.

All **vertical** cabinets are:

Depth: 16"

Width: 18"/ 24"/ 32"

Height: 77" *

*Height can be adjusted to match bed for additional fee.



Width: 18" / 24"

Top:
Exposed Shelves

Bottom:
Door w/ Shelves

Included bedside table.



Width: 18" / 24"

Top:
Exposed Shelves

Bottom:
Two Drawers

Included bedside table.



Width: 18" / 24"

Top:
Door w/ Shelves

Bottom:
Door w/ Shelves

Included bedside table.



Width: 18" / 24"

Top:
Door w/ Shelves

Bottom:
Two Drawers

Included bedside table.

Cabinets



Width: 32"

Top:
Double Doors

Bottom:
Two Drawers

Included bedside
table.



Width: 32"

Top:
Exposed Shelves

Bottom:
Double Doors

Included bedside
table.



Width: 32"

Top:
Exposed Shelves

Bottom:
Two Drawers

Included bedside
table.



Width: 32"

Top:
Double Doors

Bottom:
Double Doors

Included bedside
table.



Cabinets can be added to **horizontal** beds as well - Including on top.**

Depth: 16"
Width: 18" / 24"
Height: 57" *

*Height can be adjusted to match bed for an additional fee.

** Top cabinets are the length of the bed and 25" high.